

Supplement of Geogr. Helv., 75, 403–414, 2020
<https://doi.org/10.5194/gh-75-403-2020-supplement>
© Author(s) 2020. This work is distributed under
the Creative Commons Attribution 4.0 License.



+ GEOGRAPHICA
HELVETICA + supported by 

Supplement of

Between divine and social justice: emerging climate-justice narratives in Latin American socio-environmental struggles

Celia Ruiz-de-Oña Plaza

Correspondence to: Celia Ruiz-de-Oña Plaza (celiardo@unam.mx)

The copyright of individual parts of the supplement might differ from the CC BY 4.0 License.

Brief characterization of the religious profile of the area of study

The following tables offer a brief characterization of the religious profile of Guatemala and the border municipalities of Chiapas. They are presented here in order to point out the religious diversity that characterizes Guatemalan and Mexican society today. The Catholic past of both societies is reflected in the still significant proportion of the Catholic population. The different lines of Catholicism are not reflected in these tabulations, while the great variety of religions of the Protestant wing is shown. Since the 1980s, these religions have proliferated both in number and variety. The data are from the last available census of 2010. They also show an increasing trend in the percentage of the population that declares not to belong to any religion. However, in both Guatemalan and Mexican society, the religious fact constitutes a fundamental part of them.

Table 1. Religious category by municipality of Chiapas.

Religion	Municipality			
	Cacahoatan	Tapachula	Tuxtla Chico	Union Juarez
Catholic (%)	39.06	54.81	60.01	52.29
Protestants and Evangelicals * (%)	25.75	18.43	20.35	27.15
Bible different from Evangelicals * (%)	7.89	7.76	4.30	3.93
Judaica (%)	0.00	0.01	0.00	0.04
Other religions	0.07	0.04	0.00	0.01
No religion (%)	26.89	18.08	14.93	16.31
Not specified (%)	0.35	0.86	0.40	0.28

INEGI, 2010. Population and Housing Census, 2010. Religion by municipality. Elaborated by Yair Merlin. * Broken down in table 2.

Table 2. Main religious societies by municipality of Chiapas.

Religious Societies		Municipality			
		Cacahoatan	Tapachula	Tuxtla Chico	Union Juarez
Protestants and Evangelicals	Historical ** (%)	8.93	12.53	11.95	9.78
	Pentecostals and Neopentecostals	43.24	32.53	38.42	49.50
	Church of the Living God, Column and Support of Truth, Light of the World (%)	3.67	1.33	0.58	3.59
	Other Evangelicals (%)	20.71	23.97	31.62	24.51
Different biblical from evangelical	Seventh Day Adventists (%)	19.06	16.59	11.83	9.39
	Church of Jesus Christ of Latter-day Saints (Mormons) (%)	0.97	2.35	1.06	0.00
	Jehovah's Witnesses (%)	3.42	10.70	4.54	3.24

INEGI, 2010. Population and Housing Census, 2010. Religion by municipality. Elaborated by Yair Merlin. ** The historical ones coincide in the rejection of the authority of the Pope and in the importance given to the bible and to individual faith; it does not include the evangelical churches.

Table 3. Religion by population size.

Religion	Population size (No. of inhabitants)		
	5000 - 10000	10001 - 20000	>200000
Catholic (%)	37.30	3.45	59.25
Protestant, evangelical and biblical different from evangelical (%)	51.73	4.92	43.35
Population with other religions than the above (%)	14.69	18.18	67.13
Population without religion (%)	50.29	5.66	44.05

INEGI, 2010. Population and housing census.
Elaborated by Yair Merlin.

Table 4. Religion by community in study area of Chiapas.

Religion	Population					
	Cacahoatan	Cordova Matasanos	Santo Domingo	Talquian	Tapachula	Tuxtla Chico
Catholic (%)	63.0	57.2	69.5	46.0	80.7	43.3
Protestant, evangelical and biblical different from evangelical (%)	21.1	29.9	15.2	37.5	13.9	31.9
Population with other religions than the above (%)	0.0	0.0	0.0	0.2	0.0	0.2
Population without religion (%)	15.7	12.1	15.0	16.0	5.1	24.1

INEGI, 2010. Population and housing census. Elaborated by
Yair Merlin

Table 5. Religious diversity in Guatemala. The proportions of the unspecified Catholic and Evangelical categories are reversed according to the size of the city, showing the possible proportion in small rural communities.

Religion	Sample*	Population size						
		5.001 - 10.000	10001 – 20000	20001 – 40000	40001 – 50000	50001 – 100000	100001 and more	> 200000
Catholic (%)	41.7	10	46.2	38.2	24.3	45.6	43.9	35
Unspecified Evangelical (%)	38.7	80	36.2	42.7	47.1	36.7	36.7	38.3
Evangelical Baptist (%)	0.1	0	0	0	0	0	0.3	0
Evangelical Pentecostal (%)	0.1	0	0	0.9	0	0	0	0
Adventist (%)	0.6	0	0	2.7	1.4	0.7	0	0
Jehovah's Witnesses (%)	0.6	0	0	0.9	0	0.7	0.8	0
Mormon (%)	0.8	0	0	0.9	0	1.3	0.3	3.3
Protestant (%)	0.1	0	0	0	0	0	0.3	0
Atheist (%)	0.1	0	0	0.9	0	0	0	0
Other (%)	0.6	0	0	0	0	0.3	1.4	0
None (%)	13.8	10	17.5	10.9	22.9	11.2	13.4	20
Don't know (%)	1.2	0	0	0.9	1.4	0.7	1.9	1.7
No response (%)	1.7	0	0	0.9	2.9	2.9	1.1	1.7

The sample was 1000 people interviewed nationwide. Source: Latinobarometro, 2018. Elaborated by Yair Merlin.

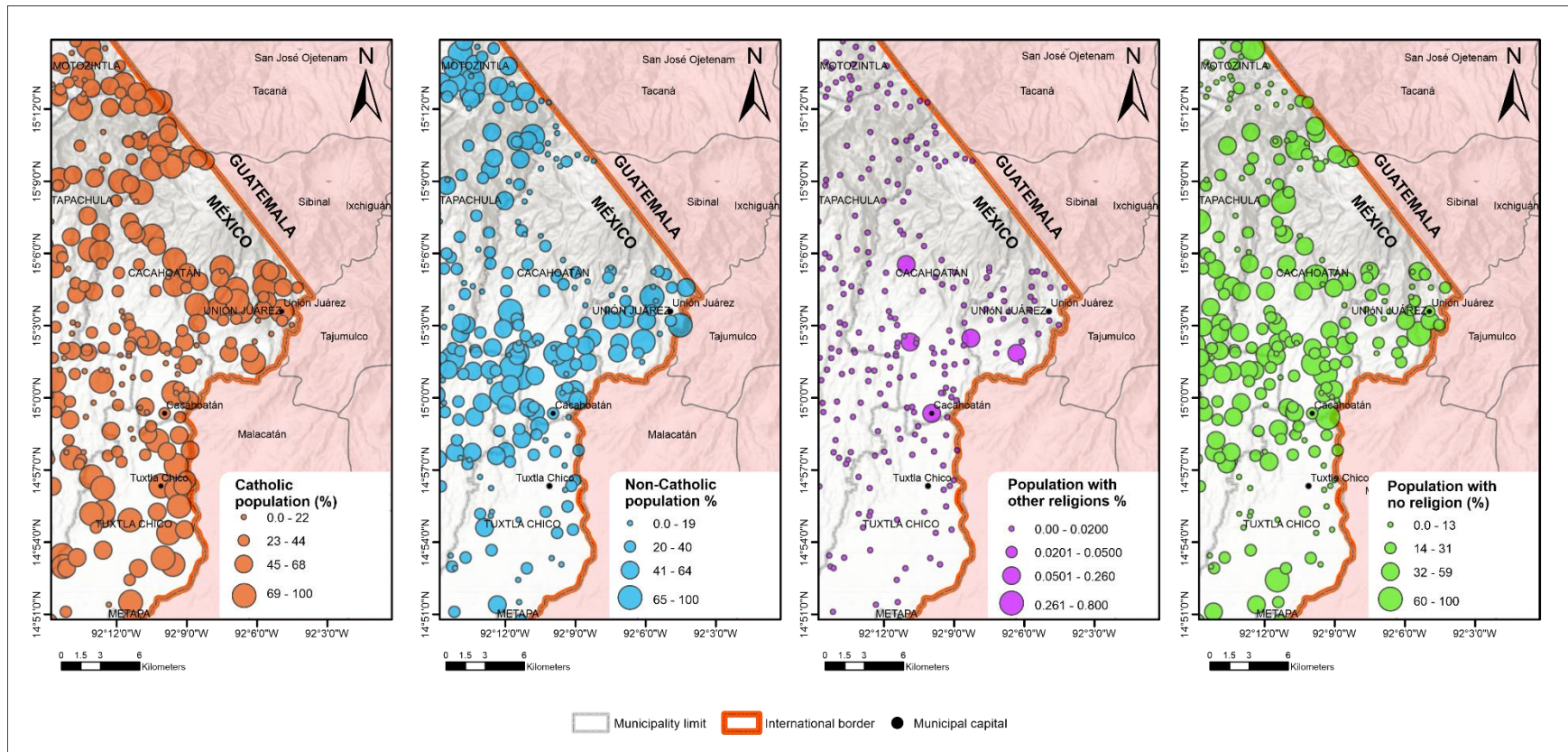


Figure 1. Religious characteristics of the population in Mexican municipalities Source: INEGI, 2010 and CONABIO, 2014. Elaborated by Yair Merlin

Data sources

INEGI, 2010. National Population and Housing Census 2010. National Institute of Statistics and Geography. Aguascalientes, Mexico. Consulted in July 2020. Available at: <https://www.inegi.org.mx/programas/ccpv/2010/default.html#Tabulados>

Latinobarómetro, 2018. Statistical information of Guatemala. Topic: Religion. Santiago de Chile, Chile. Consulted in July 2020. Available at: <https://www.latinobarometro.org/latOnline.jsp>

CONABIO, 2014. Religion by locality and municipality. National Information System on Biodiversity (SNIB). National Commission for the Knowledge and Use of Biodiversity. Mexico City. Consulted in July 2020. Available at: <http://www.conabio.gob.mx/informacion/gis/>